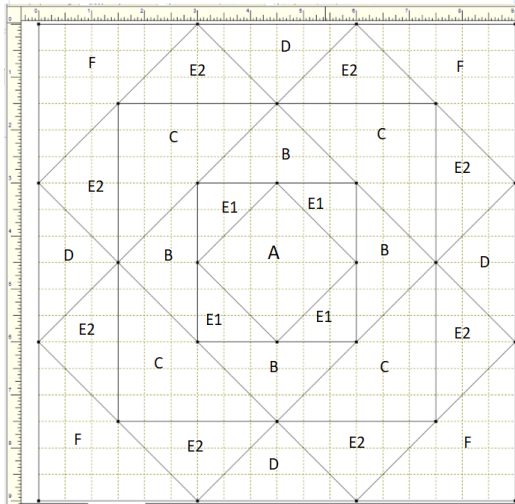


Pershing Quilt Block


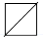

Piecing instructions using Flying Geese units



9" finished block

Use scant $\frac{1}{4}$ " seam allowance.

Cutting:

A – cut 1 square $3\frac{1}{2}$ "	E1 – cut 4 squares 2" – corners of inner square
B – Cut 2 squares $3\frac{1}{2}$ " 	E2 – cut 8 squares $2\frac{5}{8}$ " – "sky" in flying geese
C – cut 4 rectangles $2\frac{5}{8}$ " x $4\frac{3}{4}$ "	F – cut 2 squares $4\frac{1}{2}$ " 
D – cut 4 squares $2\frac{5}{8}$ "	
Sewing:	
<p>1. Place square E1 onto Square A in the corner, sew diagonally. Repeat for opposite corner. Press and trim seam allowance. Repeat for opposite 2 corners. This is the same construction as in the GW pattern. Unit should measure $3\frac{1}{2}$" square and corners of the center square A should be $\frac{1}{4}$ inch from raw edge.</p>	

2. Place the long edge of triangle B on the side of square A-E, with the tip of the triangle on the center line of the square. A small ruler or piece of plastic grid will help centering triangle B. Triangle B is oversized so the unit can be trimmed. Sew each triangle B to this unit A-E. Press and trim to $4\frac{3}{4}$ " square. When trimming, the corners of E1 should be $\frac{1}{4}$ " from the raw edge.



3. Steps 1 and 2 are the same construction as in the Gypsy Wife pattern, except that triangle B is oversized so the unit can be trimmed to the right size. This is where my construction of Pershing differs by using flying geese units for C-E. Use the sew and flip method to make 4 flying geese with rectangles C and squares E2. Place a square E2 on rectangle C, sew diagonally from the center to the corner, press and trim seam allowance. Repeat for the other corner of C. Make 3 more flying geese units the same way. They should be $4\frac{3}{4}$ " x $2\frac{5}{8}$ ".



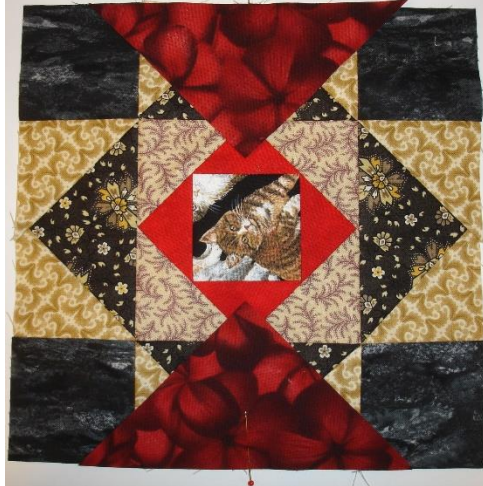
4. Sew 2 of the fly geese to opposite sides of unit A-E-B. Press seams toward the center.



5. Sew 2 D squares to the other 2 flying geese and press seams toward square D. Sew them to the other 2 sides of the emerging Pershing block as shown, nesting seams.



6. Lay the long side of triangle F on the flying geese + D unit. Sew one triangle F to each side of the unit completed in step 3. Use a ruler to center the point of triangle F in the center of the block. Repeat for the opposite side, press and repeat for the remaining 2 sides.



7. Trim to 9 1/2" centering square A. There should be 1/4" from the tip of the flying geese C and the raw edge.

